

SCULPTURE
BERMAGUI



'Father & Child' by Ross Cameron

9-17 March 2024

Bermagui – Dickinson Point Headland, Foreshore and Surf Club
sculpturebermagui.org.au
[#sculpturebermagui](https://twitter.com/sculpturebermagui)

President's Message



Sculpture Bermagui acknowledges and pays respect to the Djiringanj Yuin on whose traditional lands we present this diverse sculpture exhibition under the magnificent Gulaga.

I wish to thank all who make Sculpture Bermagui happen each year.

The artists — they are the creators, designers, craft people who bring us the ideas that make us stop, think and wonder. They add their flights of fantasy to what would otherwise be a humdrum world.

The volunteers – they are the workers who keep the world turning, giving their time, energy, and enthusiasm to exciting ventures.

The patrons – they are the nurturers, who give their acknowledgement and money that allows the artists the opportunity to make magic.

The audience – they bring their attention to the occasion and by spreading the word also spread the magic.

Sincere thanks to our patrons Philip Cox AO and Janet Hawley and to our major sponsor Bermagui Beach Hotel.

Thank you to our wonderful sponsors and donors including: Michael and Manuela Darling, Rob and Sally Hawkins, Bermagui Country Club, Bega Cheese, Harbour View House, Bermagui Motor Works, Butterfield Property, South East Arts, Four Winds, Reflections Bermagui and Debra Cushion.

THANK YOU TO OUR BERMAGUI BUSINESS SPONSORS:

- Accounting 4 Business
- Bazza's Hot Bread
- Bermagui Bait & Tackle
- Bermagui Beachside Takeaway
- Bermagui Building & Construction
- Bermagui Cellars
- Bermagui Fishermen's Cooperative
- Bermagui Fresh Food Emporium
- Bermagui Motor Inn
- Bermagui Pharmacy
- Bermagui Surf Shop
- Camel Rock Brewery
- Captain's Quarters
- ClarkeLaw
- Clay's Auto
- Four Winds
- Fullers Floor Coverings
- Gelati Clinic
- Gulaga Organics
- Harbar
- Honorbread
- Horizon Credit Union
- Horseshoe Cafe
- Il Passaggio
- Lake Road Pantry
- Marshall & Tacheci
- Mermaids
- Miracles by the Sea
- Neilson Mitre 10
- Nested on Wallaga
- Pandanus Accounting
- Pineapple House
- River Rock Cafe
- Sandy's Safari
- She Bermagui/Drift & Fossick
- Shell Service Station
- Strangers in Paradise
- Tanja Lagoon Camp
- The Village Store
- Woolworths

Exhibit 100**\$35,000.00****Tracks**

Ulan and Rachel

The haphazard patterns delineate the myriad of marks left behind when people move through a place. Lines illustrate pathways and tracks while dots indicate a confluence of activity.

Bronze

130x110x110

Headland

Exhibit 101**\$845.00****Bondi Boys**

Bronwyn Lewis

Contemporary Aussie Lifesavers.

Glazed earthenware

26x19x26

Headland

Exhibit 102**\$2,600.00****Apple**

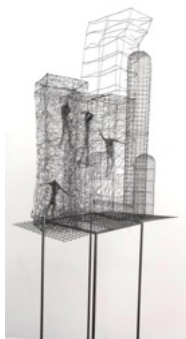
Thomas Westra

The Coin Carvers discarded bronze pennies as an artistic numismatic study.

Various bronze pennies, stainless steel stem, copper leaf, steel

35x35x120

Headland

Exhibit 103**\$10,000.00****Getting Out**

Barbara Licha

In my work I aim to refer to human condition and emotions - apathy, trouble, happiness, or motivations. "Getting Out" talks about wishes.

Galvanised wire, metal mesh, stainless steel

86x56x241

Headland

Exhibit 104**\$5,200.00****Coastal Regeneration**

Britta Stenmanns

Salvaged hardwood, hand-carved and oiled, white ant and rot-safe, stirrups to be concreted into final position.

Hardwood (Fobitu), oil

15x15x240

Headland

Exhibit 105**\$7,500.00****Fuga - wall work**

Alan Watt

This classic static form finds life in the the configuration of intricate folds and reflective surfaces.

Stainless steel

30x236x187

Headland

Exhibit 106

\$12,000.00



Shelter From the Storm
Edward Willson
From storms, fires, floods, and even society we all need to be sheltered sometimes. It's a wild world.
Granite on corten steel
90x50x175 Headland

Exhibit 107

\$3,500.00



Honey Comb #2
James Bunter
No bee, no you or me.
Sandstone, timber, steel
47x27x120 Headland

Exhibit 108

\$4,000.00



Confused
Daryl Harbrow
Confused bees wondering who is putting firewood in their honeycomb.
Corten steel and stainless steel
210x41x200 Headland

Exhibit 109

\$3,500.00



Wyrn
Paul Dimmer
Wyrn is an old word for dragon. This is a baby dragon flexing its wings.
Corten steel, mild steel
100x300x120 Headland

Exhibit 110

\$25,000.00



Fledge
Jesse Graham
"Fledge" is a symbol of new beginnings. After the 2020 fires and loss of our property, we have finally noticed a balanced return of birdlife.
Cast iron, steel, copper, bronze, concrete
150x120x140 Headland

Exhibit 111

\$2,600.00



Point of No Return
Hendrik Homann
It's time to do what you're meant for.
Yowrie wood and corten steel
35x35x210 Headland

Exhibit 112**\$1,100.00****The Voice**

Jeanette Hyde

Hand drawn then hand cut, I have sought to capture a Wattlebird as it vocally makes its presence known.

Stainless steel / Corten steel

60x4x171

Headland

Exhibit 113**\$1,650.00****Honeyeater Encounter**

Jeanette Hyde

A hand drawn and hand cut scene, celebrating the meeting of two honeyeaters amongst the flowers of a native Kangaroo Paw.

Corten steel

70x3x145

Headland

Exhibit 114**\$2,500.00****Glimpse of Nature I**

Jordan Tarlinton

A glimpse of the beautiful world that surrounds us, which captures the beauty and grace of Mother Nature.

Scrap metal, recycled timber

33x80x158

Headland

Exhibit 115**\$3,000.00****Kiss Of Life**

Mikey Barnard

Colour is visual music for the soul. It can revitalise, energise and revive. In a colourless culture it can also be rebellion.

Wood salvaged from Bermagui River, acrylic paint, sealer, marine ply and exterior house paint

35x30x160

Headland

Exhibit 116**\$3,500.00****Faerie**

Paul Dimmer

One of the few bird headed faeries in existence.

Corten steel

45x40x140

Headland

Exhibit 117**\$12,500.00****Memorial for Black Summer**

Danny Ivanovski

Six tree-like forms fabricated from stainless steel half-pipe exhausts represent 5.8 million hectares of scorched landscape during the 2019-2020 Black Summer bushfires.

Stainless steel

250x250x200

Headland

Exhibit 118 \$19,000.00



Golden Sickles
Anthony Nelipa
3mm 316 Stainless Steel with DN 80 Sch 80 316 SS support. Loves morning and afternoon sunlight for the colours to really pop!
Stainless steel and concrete
180x120x220 Headland

Exhibit 119 \$4,500.00



As The Wind Blows
James Bunter
The stronger the wind, the more it spins.
Sandstone, timber, steel
35x35x157 Headland

Exhibit 120 \$2,500.00



Glimpse of Nature II
Jordan Tarlinton
A glimpse of the beautiful world that surrounds us, which captures the beauty and grace of Mother Nature.
Scrap metal, recycled timber
30x75x165 Headland

Exhibit 121 \$3,000.00



Glimpse of Nature III
Jordan Tarlinton
A glimpse of the beautiful world that surrounds us, which captures the beauty and grace of Mother Nature.
Scrap metal, recycled timber
70x83x170 Headland

Exhibit 123 \$3,150.00



White Bellied Sea Eagle
Tony Millo
A life size metal sculpture of a local white-bellied sea eagle in full flight, with a captured abstract prey clasped between its claws.
Mild steel
85x180x110 Headland

Exhibit 125 \$19,000.00



On Bait
Anthony Nelipa
3mm 316 stainless steel with DN 80 Sch 80 316 SS support. The textured polish finish captures and reflects in all lighting day and night.
316 stainless steel and concrete
150x120x310 Headland

Exhibit 126 \$23,000.00



The Bull
Sommerset Coker
The Bull embodies the strength, power and endurance of the animal. This combined with the rusted corten steel creates a visually striking and mesmerising presence.

Corten steel
360x130x165 Headland

Exhibit 127 \$25,000.00



Whale Song
James Rogers
Composition of parts invoking a breaching; a voice can be added for imagining.

Galvanised steel
420x323x3000 Headland

Exhibit 128 \$5,300.00



Seed Pod
Sam Anderson
The simple form of the seedpod; the circles producing a light show of shadows throughout the day. Elegance in simplicity.

Recycled steel pipe and mild steel
50x60x320 Headland

Exhibit 129 \$10,000.00



Voyage of Expectation
Peter Tilley
The work is about imagining a journey in spite of obstacles that come between the figures of a journey and the realisation of that journey.

Cast iron objects on a corten steel base
37x34x162 Headland

Exhibit 130 \$18,000.00



Inception
Sam Anderson
The human evolutionary growth from the wheel and into the new technological age, where the majority of work will be done by robots and computers. Can we evolve without losing the romance of the past?

Recycled steel and mild steel
250x550x270 Headland

Exhibit 131 \$500.00



Pyramid and Cubes
Daniel Burkhardt
The fondness for geometry, angles, straight lines, numbers, and motion, with the emphasis on squares, four big triangles, cubes and the number four.

Painted PVC pipes, stainless steel cables
320x320x240 Headland

Exhibit 132**\$7,000.00****Precarious 6**

Gary Christian

Here we are at the edge - banged up but still standing.

Powder coated and galvanised steel on corten base
45x45x219 Headland

Exhibit 134**\$2,000.00****Fence Sitter**

Daryl Harbrow

Eagle landing on fence.

160x60x150 Corten steel Headland

Exhibit 135**\$3,000.00****Passenger**

Paul Dimmer

A quirky boat with a strange passenger.

90x30x120 Corten steel Headland

Exhibit 136**\$7,200.00****A Long Walk Home**

Sam Anderson

The emu, such an iconic Australian animal, hardy, quirky and part of such a diverse range of unique animals to this country.

Recycled steel and mild steel
140x50x170 Headland

Exhibit 138**\$8,200.00****Tender**

Britta Stenmanns

The ever-changing light creates a patterned topographic shadow of the sculpture, adding another layer of language in its environment, a "connection to the awareness of life itself".

Salvaged mild steel, oiled and sealed, gold leaf, self-standing
100x110x205 Headland

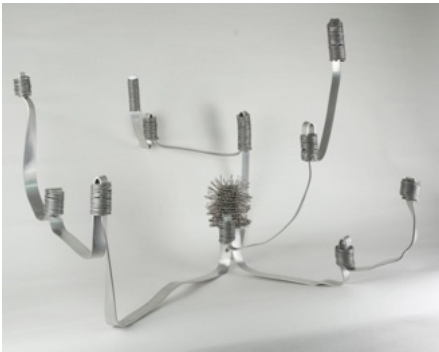
Exhibit 139**\$6,000.00****Regrowing**

Akira Kamada

We living creatures lived there. Amongst friends. We lived naturally, instinctively, with nature. Now I can only raise my voice. And ask for you to listen. Price includes installation in NSW.

Fallen branches, timber off cuts, rope
300x300x300 Headland

Exhibit 140 **\$1,300.00**



Banksia Robur
Boyd McMillan
Made up of the structure of the banksia with its flower as the focal point, joining the branching pieces, hand rivetted together in aluminium.

Aluminium
800x800x700 Headland

Exhibit 141 **\$10,000.00**



Sailing to the Sirens
Gary Christian
Contemplating life's journey.
Chromed, powder coated and galvanised steel
60x151x168 Headland

Exhibit 142 **\$3,500.00**



Over Under in Between
Simon Bowley
This sculpture is made from glazed and black fired ceramics and consists of juxtaposing forms and surfaces.

Ceramics
20x25x180 Headland

Exhibit 143 **\$6,500.00**



Dance of the Fire Nymphs I
Wil Edwards-Franchimon
Struggling to withstand recent bushfires, trees twist and stretch in harmony, competing for light and space in our diminishing forests.

Corten steel, enamel paint
74x54x215 Headland

Exhibit 144 **\$5,500.00**



Dance of the Fire Nymphs II
Wil Edwards-Franchimon
The graceful choreography of our remnant rainforests provides quiet relief for diverse species to regenerate in a world of diminishing wilderness.

Corten steel, enamel paint
51x45x179 Headland

Exhibit 145 **\$7,500.00**



Multifold Tower
Alan Watt
This work treads lightly as it rises dramatically from kiss touches to the ground.

Stainless steel plus corten steel base
35x86x250 Headland

Exhibit 146

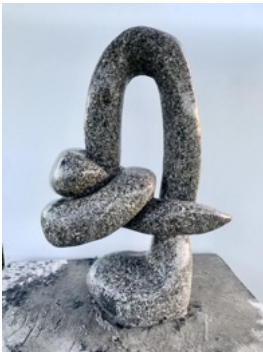
\$1,100.00



Banished Buildings
Gavin Roberts
Banished Buildings is a tongue in cheek representation of how our cities are taking over the earth's natural environment.
Redgum and cement
40x40x150 Headland

Exhibit 147

\$8,000.00



Diverted
Edward Willson
Taking the long way can often be the best way; smell the flowers.
Granite on corten steel
30x30x160 Headland

Exhibit 149

\$5,500.00



Escape Pod
David Keating
Escape pod is a vehicle for a harsh world. Step inside, hang on and get outta here. Taking off any time now. Don't miss it.
Wood, steel, paint, found objects
436x225x335 Headland

Exhibit 150

\$3,200.00



Princess
Daryl Harbrow
Princess is obviously a Show Pony.
Corten steel
160x60x120 Headland

Exhibit 151

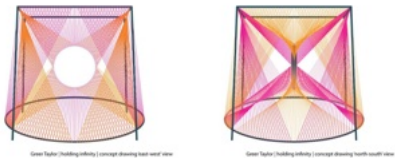
\$28,000.00



Radiance
Thomas Westra
A luminous beacon, radiating light that is synonymous with the inner glow of the human spirit.
Polished 316 stainless steel, 88 individually formed and textured bronze buttons fixed with stainless steel bolts, cast concrete base
100x100x308 Headland

Exhibit 152

\$22,000.00



holding infinity
Greer Taylor
Nature has capacity for infinity - we do not. Our short-termism eats infinity. This work invites visitors to contemplate their own and shared relationship to infinity.
Powdercoating on steel, polished aluminium, PVC string
280x280x220 Headland

Exhibit 154

\$2,500.00



Equus
Paul Dimmer
A horse deity.

70x30x125

Corten steel

Headland

Exhibit 155

\$18,500.00



Siren
Gavin Roberts
Longing to return to the sea, siren lives on land
wondering if she made the right choice. Time will tell...

180x180x350

Cement render, corten steel

Headland

Exhibit 156

\$30,000.00



Escaping Gravity
Christine Madies
A passage from a dark, heavy and static material to a
light, supple and animated one. A challenge to the laws
of gravity?

80x50x125

Marble and granite

Headland

Exhibit 158

\$22,000.00



Water Bowl for the Visitor
Ross Cameron
Kindness to strangers... imagine a better world!

350x230x260

Corten steel, mild steel, polymer cement

Headland

Exhibit 159

\$2,000.00



Beach Break
Jeff Hyde
I have a fascination with the rolling formation of waves in
the surf.

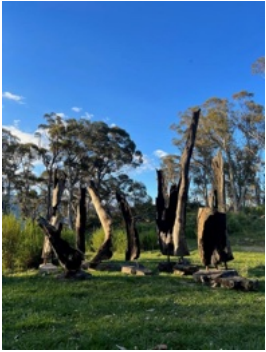
165x10x120

Steel

Headland

Exhibit 160

\$50,000.00



Burnt Time
Luke Russo
Burnt Time: Encased in charred timber, aged copper,
and weathered stone, the sculpture reflects time's stoic
impact, inviting observers to witness the enduring
transformation of elemental materials.

400x500x270

Timber, copper and stone

Headland

Exhibit 161

\$65,000.00



The Mare
Somerset Coker
The Mare, with its bold stance, captures the grace and power of this majestic animal. Made from Corten steel; will maintain a rusty patina.
Corten steel
275x86x225 Headland

Exhibit 162

\$4,000.00



Twister
Jeff Hyde
Sometimes, it's all about the twists and turns.
Stainless steel
70x50x180 Headland

Exhibit 163

\$2,500.00



It's Complicated
Jeff Hyde
When I allow the steel to find its own form, it will take control. It dictates the direction, it knows where it wants to go, it knows what it wants to be.
Steel / Stainless steel
80x70x100 Headland

Exhibit 164

\$1,200.00



Not As Complicated
Jeff Hyde
Letting it be what it wants to be.
Mild steel / Stainless steel / Timber
70x45x140 Headland

Exhibit 165

\$650.00



Coastal Collage
Rosemary Millard
Objects typifying those found after high tides on the sea shore.
Timber, glass and found objects
150x200x5 Headland

Exhibit 166

\$850.00



Hope
Anthony Millard
A hope for the world. Includes a live olive branch which will be refreshed during the exhibition.
Timber and plaster with a brass display rod
45x45x190 Headland

Exhibit 400 \$1,100.00



Flutter
Jeanette Hyde
Hand drawn then hand cut, an Eastern Spinebill flutters in mid-air, looking for a place to land.
Stainless steel / Corten steel
55x4x176 Hotel

Exhibit 401 \$1,450.00



On the Breeze
Darwin Smith
Hand carved wooden sculpture of an eagle gliding through the breeze. The piece has been created to showcase unique markings and grains of the timber.
Wood - Camphor laurel
100x65x190 Hotel

Exhibit 402 \$780.00



Blue Shark
Bill Insch
Relief wall hung sculpture.
Driftwood, metal, ceramic, oil based paint
166x15x66 Hotel

Exhibit 403 \$720.00



Sawtooth Shark
Bill Insch
Relief wall hung sculpture.
Driftwood, metal, ceramic, oil based paint
170x20x44 Hotel

Exhibit 404 \$680.00



Blue
Bill Insch
Relief wall hung sculpture.
Driftwood, metal, ceramic, oil based paint
90x15x44 Hotel

Exhibit 500 \$3,200.00



Woman
Sam Anderson
A woman...
Mild steel
40x40x180 Surf Gallery

Exhibit 501**\$980.00****Sanctuary**

Jenni Bourke

Gulaga, Baranguba and Narooma waters... The variety of vistas and activities that comprise my life in beautiful Yuin country and constitute my personal sense of place. My Sanctuary.

Clay, underglaze and glaze

36x36x34

Surf Gallery

Exhibit 502**\$550.00****Holidays**

Jenni Bourke

This piece is my clay collage of holiday experiences. My chosen colours reflect the vibrant colours of this beautiful country.

Clay, underglaze and glaze

30x30x26

Surf Gallery

Exhibit 503**\$550.00****Coils of Curiosity**

Kym Brookes

Coils of wisteria and ivy vine draw your eye into the centre towards five hand made porcelain creations hidden and waiting to be discovered.

Porcelain clay, wisteria vine, ivy vine, wire

54x30x30

Surf Gallery

Exhibit 504**\$250.00****Reduce**

Daniel Burkhardt

A road sign to slow down with a wishful and wistful antidote to rampant exploitation of insatiable consumerism.

Repurposed painted corflute, fairy lights, recycled painted timber frame

93x13x93

Surf Gallery

Exhibit 506**\$4,500.00****Thin Blue Line**

Kate Butler

This work is a homage to environmental defenders who are striving to prevent the hellscape of environmental collapse in spite of draconian NSW anti-protest laws.

Recycled slate roof tiles, gold on hand formed substrate

58x32x7

Surf Gallery

Exhibit 507**\$2,600.00****Father and Child**

Ross Cameron

We hold close those we love.

Bronze

10x10x43

Surf Gallery

Exhibit 508 **\$2,900.00**



Back from the Brink
Alexander Dalton
Southern Right whale bronze, identifying an individual whale by the placement of facial markings. This mum has had three babies over the last 15 years helping bring this critically endangered leviathan back from the brink of extinction.

30x15x30 Foundry bronze Surf Gallery

Exhibit 509 **\$4,000.00**



Warp
Paul Dimmer
A ship twisted in places by the elements.

100x30x100 Corten steel Surf Gallery

Exhibit 510 **\$15,000.00**



Eternally Elemental
Patrick Doherty
This piece encompasses the notion that beauty lies within everything. Within the shells that surround all things shaped in this world by the elements around them, we find true beauty.

25x25x50 Basalt stone Surf Gallery

Exhibit 514 **\$750.00**



Woman in Blue
Pamela Drewitt Smith
Sculptured from a sketch drawn with a nude model.

Twice fired ceramic and matte blue paint, black granite base
22x20x16 Surf Gallery

Exhibit 515 **\$990.00**



Sea Pots
Kristene Dunne
Set of 3 Sapphire Coast inspired ocean pots. Wheel thrown, making my own glazes to reflect our beautiful coast.

50x55x105 Stoneware clay Surf Gallery

Exhibit 516 **\$550.00**



Floating on the Wind
Wil Edwards-Franchimon
As Arctic Terns migrate to the Antarctic each year, observing our increasing environmental care with hope, they alight at our coastal villages to reflect.

52x25x34 Corten steel, enamel paint Surf Gallery

Exhibit 517**\$2,800.00****Dynamic Abstraction IV (Pocket Rocket)**

Jonathan Foley

What's she doing? She's a competitor so she's going for it at maximum speed and loving every moment!

Paonazzo' Carrara Marble and Darkinjung Sandstone
20x20x33
Surf Gallery

Exhibit 518**\$4,200.00****Fly Me to the Moon**

Amanda Harrison

Parents play a pivotal role in their children's lives, the pillars of support, guidance and love that will launch them safely into the future.

Bronze and granite
48x18x38
Surf Gallery

Exhibit 519**\$720.00****My Sunshine**

Amanda Harrison

Sometimes there's no better place to be than in the glow of their sunshine, knowing everything will be alright.

Ceramic
24x22x42
Surf Gallery

Exhibit 520**\$500.00****Mountain, Moon & Ship**

Wendy Howard

I proceed from point, line, plane to form, then experiment with the interaction of gravity and resulting balance, in this case rocking.

Silk and cardboard
60x60x90
Surf Gallery

Exhibit 521**\$1,850.00****The Ammonite**

Tobie Hynes

An ancient crustacean brought back to life by objects thought to be at the end of theirs.

Car parts, cutlery, recycled timber, old tools
45x10x25
Surf Gallery

Exhibit 522**\$980.00****Large Shark**

Bill Insch

Relief wall hung sculpture.

Driftwood, metal, ceramic, oil based paint
204x23x90
Surf Gallery

Exhibit 523

\$900.00



Reverance

Megan Juresa

"I come into the peace of wild things" - Wendell Berry.

Grass, linen, beeswax, vintage velvet
19x18x8
Surf Gallery

Exhibit 524

\$1,200.00



Dryad

Megan Juresa

Much of what I make is determined by seasons, weather and tides. A garland for a dryad, made from gumnuts brought down by a storm.

Eucalyptus, linen, cotton, beeswax
107x14x5
Surf Gallery

Exhibit 525

\$1,400.00



Selkie 3

Megan Juresa

A garland for a Selkie, constructed with materials from both ocean and land. The seaweed is Phyllospora comosa.

Seaweed, linen, beeswax, driftwood, quartz, freshwater pearls
152x33x3
Surf Gallery

Exhibit 526

\$2,400.00



Looking Forward Into The Past

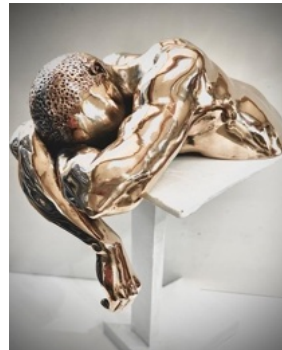
Neil Laredo

Inspired by one of the gates at the Heian Shrine in Kyoto, Japan, I have used the gate as a portal into time and space.

Tasmanian oak and glass
58x7x56
Surf Gallery

Exhibit 527

\$5,000.00



Tranquility

Peter Lewis

This work captures a deep sense of 'Tranquility' in the form of the upper body of a man sleeping peacefully.

High polished bronze on painted timber stand
23x13x27
Surf Gallery

Exhibit 528

\$5,000.00



Asleep - Series 3

Peter Lewis

A stylised sculpture of a man 'Asleep' with his head gently resting on his folded arm. Limited edition. Will go green if placed outdoors.

Bronze
52x24x18
Surf Gallery

Exhibit 529**\$4,000.00****Mischief**

Peter Lewis

Miniature pair of sculptures depicting Shakespeare's characters Puck and Bottom from A Midsummer's Night Dream. Puck is making 'Mischief' while Bottom slumbers in the woods.

20x9x8 Polished stainless steel Surf Gallery

Exhibit 530**\$2,200.00****Time**

Barbara Licha

Time is important to rethink, redo and consider new opportunity. Time addresses that and shows extra possibilities we can discover when alone.

56x56x120 Galvanised wire Surf Gallery

Exhibit 531**\$10,000.00****Growing Outside, Digging Inside**

Christine Madies

Some trees would become hollow in order to keep growing. What appears to be a wound might be part of the process of growth.

52x30x70 Carrara statuario marble Surf Gallery

Exhibit 532**\$2,200.00****Alone**

Kerry Mahony

Original bronze, no copies made. The artist uses body language to express emotion in her figurative sculptures.

14x14x25 Bronze Surf Gallery

Exhibit 533**\$2,200.00****Flamenco Dancer**

Kerry Mahony

Original bronze, no copies made. The artist uses body language to express the emotion of the traditional Gitano flamenco dancer.

14x14x36 Bronze Surf Gallery

Exhibit 534**\$15,000.00****Duet**

Ulan and Rachel

We work from memory to extrapolate our narratives. Whilst the works are reminiscent of familiar tree species, they reflect a poetic commentary on nature and our changing environment.

65x45x170 Copper and corten steel Surf Gallery

Exhibit 535**\$1,700.00****Moment to moment (cacoon) feminine**

Robert Newberry

Cut timber with bandsaw symbolizing duality and moment to moment change of nature in its shape and form.

Timber

10x60x14

Surf Gallery

Exhibit 536**\$470.00****The Chips**

Dianne O'Neill

My artwork celebrates the smaller moments in life. For instance, when the child's chips are stolen by seagulls. What will happen next?

Recycled metal

50x55x4

Surf Gallery

Exhibit 537**\$470.00****Holiday Panorama**

Dianne O'Neill

The panorama is witnessed by the iconic, whimsical figures of the dog and seagull, which are ever present at the Australian beach.

Recycled metal

84x39x13

Surf Gallery

Exhibit 538**\$350.00****Coral #06**

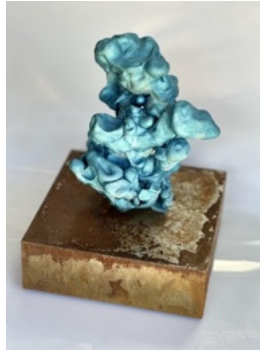
Christian Oyrer

Coral is made using recycled aluminium from local metal fabricators, individually anodised and mounted on a corten steel base.

Aluminium, corten steel & stainless steel

15x15x20

Surf Gallery

Exhibit 539**\$350.00****Coral #21**

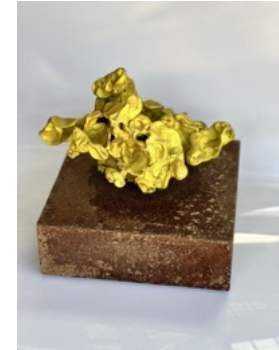
Christian Oyrer

Coral is made using recycled aluminium from local metal fabricators, individually anodised and mounted on a corten steel base.

Aluminium, corten steel & stainless steel

15x15x20

Surf Gallery

Exhibit 540**\$300.00****Coral #03**

Christian Oyrer

Coral is made using recycled aluminium from local metal fabricators, individually anodised and mounted on a corten steel base.

Aluminium, corten steel & stainless steel

15x15x15

Surf Gallery

Exhibit 541**\$750.00****El Nino**

Anneke Paijmans

One of two pieces - depicting the harsh dry heat of the El Nino climate event. Its sister piece depicts the wet weather from the La Nina event, experienced as cyclical phenomena on the Australian continent.

Woodfired ceramic, Tanja clay

46x22x10

Surf Gallery

Exhibit 542**\$750.00****La Nina**

Anneke Paijmans

Sister piece to El Nino, La Nina depicts the wet weather event, in the cyclical climatic phenomena on the Australian continent.

Woodfired ceramic, Tanja clay, glass

45x29x10

Surf Gallery

Exhibit 543**\$1,125.00****Flipper**

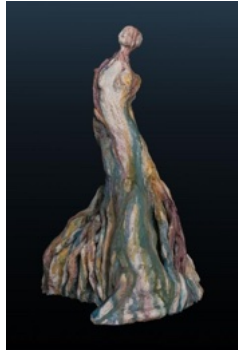
Sam Perks

Just a fun little character who loves to swim, jumping in to all the fun moments in life.

Ceramic

20x25x40

Surf Gallery

Exhibit 544**\$800.00****Eo**

Melinda Retford

A visual narrative of the intricate emotional bonds that tie us to the earth; the mysteries that unfold within and beyond our tangible reality.

Ceramic BRT, dry glaze, coloured stain, acrylics

35x30x45

Surf Gallery

Exhibit 545**\$1,300.00****Dwell**

Gavin Roberts

Many of us aspire to be isolated and have our own private place on earth. Dwell is a small landscape with big ideas.

Brass, plywood and redgum burl

50x60x130

Surf Gallery

Exhibit 546**\$1,200.00****Cogged Emperor**

Gavin Roberts

A great catch, the Cogged Emperor can be freestanding, hung, vertical or horizontal.

Redgum and plywood

60x12x120

Surf Gallery

Exhibit 547

\$900.00



Untitled

Craig Rowlands
Sculptural wallhanging - black fired ceramic panels on brass chassis.

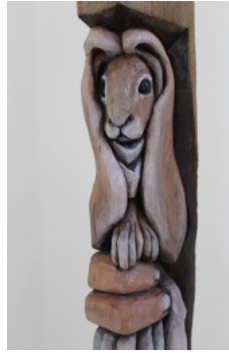
3x50x80

Ceramic and brass

Surf Gallery

Exhibit 548

\$5,200.00



Safeguarding

Britta Stenmanns
Salvaged hardwood, hand-carved.

Hardwood (Fobitu), gold leaf, sealed
15x15x2400

Surf Gallery

Exhibit 549

\$950.00



Eucalypt Leaf

Shannon Stone
Eucalypt leaf.

160x40x20

Coated steel

Surf Gallery

Exhibit 550

\$8,000.00



Faun

Dawid Szymczyk
Faun is a god of wine and fun from ancient Greece, guardian of vineyards and fertility.

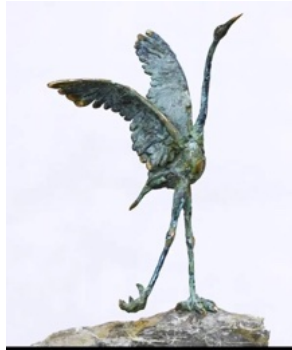
30x35x90

Bronze

Surf Gallery

Exhibit 551

\$3,000.00



Heron

Dawid Szymczyk
The heron is a bird soaring towards freedom and space.

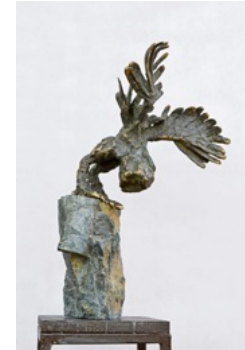
35x20x40

Bronze

Surf Gallery

Exhibit 552

\$4,500.00



Owl

Dawid Szymczyk
The sculpture shows an owl sitting curiously on the stone; it is a bird symbolising wisdom.

30x30x60

Bronze

Surf Gallery

Exhibit 553**\$1,620.00****Rose Spire**

Colin Tapping

A modern abstract style exploring freedom of expression in Western Rose Wood affected by lightning and fire but still remaining tall with its essence intact.

Western Rose Wood

8x8x100

Surf Gallery

Exhibit 554**\$1,150.00****Freehand**

Colin Tapping

Freehand. Created with no plans, only the strategy to allow nature to show the form and lines that I could mould when carving this piece.

Coastal Red Gum Burl

50x25x40

Surf Gallery

Exhibit 555**\$650.00****Pod**

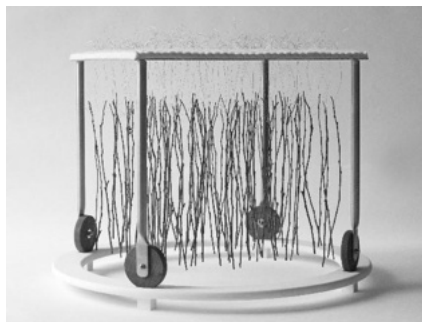
Colin Tapping

This piece was inspired by the numerous varieties of Australian Eucalyptus seed pods we see after fire and the hidden treasures found underground.

Eucalyptus root burl

35x20x25

Surf Gallery

Exhibit 556**\$3,200.00****Around About**

Greer Taylor

A tiny delicate universe: a felted, mirrored, vibrating, hanging forest set on wheels spinning on its own axis — a reminder of our own vulnerable planet.

Found sticks, wire, stainless steel, wood, felt, cotton, text, acrylic

50x50x36

Surf Gallery

Exhibit 557**\$880.00****Summer**

Ralph Tikerpae

This hand carved work is a celebration of summer, reflected in its colours, playful brushstrokes, and optimism for the future.

Carved painted wood

96x21x8

Surf Gallery

Exhibit 558**\$900.00****Yellow Crowned Mermaid**

Ralph Tikerpae

A Mermaid Queen slowly passes and sparkles, reminding us of the mystical joys of storytelling evoked through our childlike imagination.

Carved painted wood

104x27x5

Surf Gallery

Exhibit 559**\$860.00****Gentle**

Ralph Tikerpae

This hand carved work is a House Totem that is a constant reminder to slow down and enjoy the quieter moments from within our lives.

Carved painted wood

104x21x6

Surf Gallery

Exhibit 560**\$5,000.00****Leaving the Past Behind**

Peter Tilley

The figure is steadfastly positioned within the boat, contemplating, perhaps about an imagined voyage or means of escape, it may be an unknown destination that is not predictable.

Painted resin, painted timber

81x21x92

Surf Gallery

Exhibit 561**\$1,200.00****Focal 1**

Daniel Venables

Focal interrogates whether clinical "chemical" diagnoses are useful in the understanding and embodiment of psychological darkness. Or, whether we gain a more comprehensive understanding through the language of alchemy, referencing the form of a telescope.

Blown glass, forged steel, turned brass, reclaimed jarrah
60x54x170

Surf Gallery

Exhibit 562**\$1,000.00****Wave 1**

Judy Witherdin

Wave constructed using the fused method of firing glass. Recycled glass from the Canberra crematorium.

Glass

35x10x10

Surf Gallery

Exhibit 563**\$1,000.00****Wave 2**

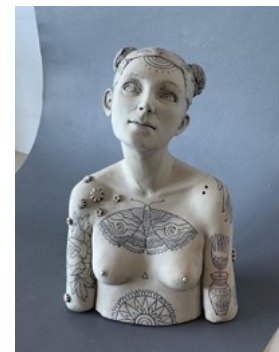
Judy Witherdin

Wave 2 formed by using the fused method of forming glass in the kiln. Bullseye diachroic glass has been used.

Glass

35x10x10

Surf Gallery

Exhibit 564**\$2,200.00****Daydreaming**

Blossom Young

An exploration of the line between realism and idealism, incorporating my love of illustration with my love of form, often inspired by fragments of personal stories.

Ceramic sculpture, stoneware, mishiima illustration,
oxide wash, calcium matt glaze

15x21x29

Surf Gallery

Exhibit 565 **\$950.00**



House Tiger
Blossom Young
Cats are a perfect animal in my eyes; their form and patterns, their grace and presence, their cuteness. I tried to capture all that in this work.
Ceramic, stoneware, oxide wash, gold paint
19x13x27
Surf Gallery

Exhibit 566 **\$650.00**



Three Arm Spiral Mandala
Nick Hopkins
With the soft tones of the Hoop Pine (plantation grown) and black glue lines for definition this mandala showcases both concentricity and spiral geometry to draw the viewer in.
Hoop pine plywood
90x5x90
Surf Gallery

Exhibit 567 **\$1,200.00**



Maple Leaf
Shannon Stone
Maple leaf.
Coated steel
140x120x20
Surf Gallery

Exhibit 800 **\$1,350.00**



Flippancy
Paul Bradley
A Fur Seal wrestles with two vessels.
Camphor Laurel
65x40x180
Street Gallery

Exhibit 801 **\$3,800.00**



In the Balance 2
Gary Christian
I hope we don't fall.
Bronze egg and powder coated steel
16x28x56
Street Gallery

Exhibit 802 **\$2,800.00**



Bridge Timber Series
Todd Costa
With illumination this sculpture come to life at night.
Recycled hardwood, copper, steel and low voltage weatherproof light
30x20x130
Street Gallery

Exhibit 803

\$3,500.00



Drylander 2
Paul Dimmer
A ship evolved to sail barren lands.

Recycled stainless steel, shoe lasts
50x60x130 Street Gallery

Exhibit 804

\$750.00



Dance of the Fire Nymphs (Maquette)
Wil Edwards-Franchimon
As our forest species twist in harmony to support their ecosystems, we can also modify our lifestyles to nurture our remaining environment.

Corten steel, enamel paint
33x31x63 Street Gallery

Exhibit 805

\$450.00



Wisp (Blue)
Wil Edwards-Franchimon
A reflection on the resilience of our natural environment to re-emerge through the challenges of our 21st century climate.

Corten steel, enamel paint
30x31x18 Street Gallery

Exhibit 806

\$400.00



Save Me
David Enbom
Who wouldn't protect this graceful endangered seal?

Cypress
80x25x25 Street Gallery

Exhibit 807

\$750.00



Migaloo
David Enbom
Migaloo renowned white humpback whale (White Fella).... Hope he's still out there and hopefully protecting a calf.

Cypress
80x30x30 Street Gallery

Exhibit 808

\$800.00



King of the Skies
David Enbom
The magnificent wedge-tailed eagle.

Cypress
30x30x100 Street Gallery

Exhibit 809

\$4,350.00



Intertidal fragments

Ivana Gattegno

My work expresses the merging forces of the estuary and the lake with its dynamic shifting sands and intertidal play. The fragments serve as a profound visual metaphor capturing the intersection of external landscapes and the mysterious dark recesses of my mind.

Fired and waxed clay

120x60x5

Street Gallery

Exhibit 810

\$2,900.00



Wheels of Misfortune

Neil Graham

Bushfire, Covid, financial and industrial decline, homelessness... This sculpture is a prayer for better times to come.

Steel, wood base

48x28x30

Street Gallery

Exhibit 811

\$800.00



Hibernation Aura

Mel Gras

We are the ambience of the resting tempo, lying dormant being the gift of taking pause. Asking less of ourselves until waking, when light and warmth are again restored.

Stoneware clay, terra sigillata, saggar fired
40x20x20
Street Gallery

Exhibit 812

\$950.00



Beautiful Boy

Amanda Harrison

There's nothing better than a wrap-around hug for safety, security and comfort.

Ceramic

26x20x36

Street Gallery

Exhibit 813

\$2,500.00



Two Minutes to....Tea Time!

Amanda Harrison

We have the ability to pull together to save the planet if we take responsibility, cooperate, and focus on the task at hand.

Ceramic, string and recycled wood (ladder)
86x56x200
Street Gallery

Exhibit 815

\$4,000.00



Seed of Content

Hendrik Homann

Sow when the time is right. Eucumbene wood & bunga shale with devonian lepidosigillaria fossil.

Wood and bunga shale
12x12x30
Street Gallery

Exhibit 817**\$390.00****Nautical Novelty**

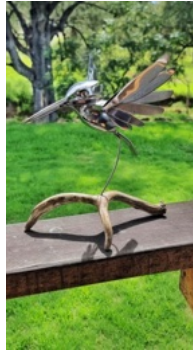
Nick Hopkins

Originally created on the lathe this whimsical piece was sliced and reassembled on a blade wall. It comes apart in 3 sections.

50x30x16

Hoop pine plywood

Street Gallery

Exhibit 818**\$1,250.00****King Fisher**

Tobie Hynes

Utilising the original shapes of discarded cutlery, this unique sculpture captures our native kingfisher mid flight.

30x20x30

Recycled cutlery, natural deer antler

Street Gallery

Exhibit 819**\$600.00****Scorched Earth**

Daniel Lafferty

This sphere is made of local clay and has been fired in a wood burning kiln. It is placed with melted aluminium from the 2020 fires. Scorched earth is a reference to global warming.

29x29x29

Local wood-fired clay

Street Gallery

Exhibit 820**\$495.00****Best Pals**

Bronwyn Lewis

The happiest best canine mates, oblivious to their differences.

33x13x30

Glazed earthenware

Street Gallery

Exhibit 821**\$3,000.00****Destiny**

Peter Lewis

This abstract work is a spherical form with a wandering path that leads to one's 'Destiny'.

30x20x40

Limestone on granite base

Street Gallery

Exhibit 822**\$3,040.00****Love and life - life and love**

Ian Livingston

Timber sculpture by local artist Ian Livingston. I would like to thank the community for support and encouragement.

10x30x40

Cyprus pine

Street Gallery

Exhibit 823**\$800.00****About Face**

Susan McAlister

About Face 'to turn around, reassess, look at the world through different eyes'. This that may cause a redirection, even a reversal of existing attitudes and opinions.

Cold finished ceramic

25x45x40

Street Gallery

Exhibit 824**\$550.00****Pod**

Louis McCallum

This asymmetric ceramic form draws on shapes in the natural environment around Bermagui - seed pods, anthills, rocky outcrops.

Stoneware clay with copper oxide glaze

20x20x38

Street Gallery

Exhibit 825**\$900.00****Red Leaves**

Boyd McMillan

Branches appear to grow upwards from the base wrapping around as they stretch for the light. Red leaves introduce a playful non naturalistic element.

Acrylic and copper

50x40x70

Street Gallery

Exhibit 826**\$3,700.00****Chasing Shadows**

Anthony Nelipa

3mm 316 Stainless Steel with 25mm 316 SS support.

316 Stainless Steel

100x40x50

Street Gallery

Exhibit 827**\$1,700.00****Nature of 4 masculine**

Robert Newberry

Playful nature between curved progressive straight lines and square boxes.

Timber

50x60x140

Street Gallery

Exhibit 828**\$400.00****Coral #18**

Christian Oyrer

Coral is made using recycled aluminium from local metal fabricators, individually anodized and mounted on a corten steel base.

Aluminium, corten steel & stainless steel

15x15x20

Street Gallery

Exhibit 829

\$450.00



Coral #09

Christian Oyrer

Coral is made using recycled aluminium from local metal fabricators, individually anodised and mounted on a corten steel base.

Aluminium, corten steel & stainless steel
15x15x20 Street Gallery

Exhibit 830

\$1,125.00



Peace, Love and Techno

Sam Perks

The modern hippy, standing for peace and love in a technical world, while grooving to the soundtrack pumping from the phone in their back pocket!

Ceramic, guitar wire
20x20x35 Street Gallery

Exhibit 831

\$4,000.00



Lefts and Rights

James Rogers

Composition of conical sections, going both ways.

Waxed steel
30x120x47 Street Gallery

Exhibit 832

\$600.00



From the Rainforest

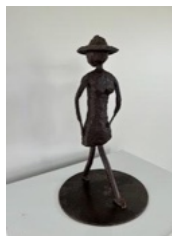
Suzanne Shelley

From the Rainforest, Blackheart Sassafras. Trauma; signs of suffering generated by fungi entering the bark and staining areas black created a desirable and distinctive quality to highlight in this sculpture.

Blackheart sassafras
35x20x67 Street Gallery

Exhibit 834

\$1,500.00



The Farmer's Wife

Shannon Stone

The farmer's wife.

Coiled steel
50x30x30 Street Gallery

Exhibit 835

\$1,200.00



Focal 2

Daniel Venables

Focal interrogates whether clinical "chemical" diagnoses are useful in the understanding and embodiment of psychological darkness. Or, whether we gain a more comprehensive understanding through the language of alchemy, referencing the form of a telescope.

Blown glass, forged steel, turned brass, reclaimed spotted gum
60x54x170 Street Gallery

Exhibit 836**\$1,200.00****Focal 3**

Daniel Venables

Focal interrogates whether clinical "chemical" diagnoses are useful in the understanding and embodiment of psychological darkness. Or, whether we gain a more comprehensive understanding through the language of alchemy, referencing the form of a telescope.

Blown glass, forged steel, turned brass, reclaimed river red gum

60x54x170

Street Gallery

Exhibit 837**\$3,150.00****Reclaimed**

Leeanne Voss

This piece shows that even something broken can sustain new life.

55x60x100

Textile

Street Gallery

Exhibit 838**\$3,950.00****Underwater Wonders**

Leeanne Voss

The beauty and the colours of the fish and corals of our natural wonder.

90x70x90

Textile

Street Gallery

Exhibit 839**\$400.00****Reach**

Kate Wall

Perhaps with just the old and the ordinary, we can still reach for something better.

27x20x60

Wood, paint

Street Gallery

Exhibit 840**\$450.00****Triumph of the Trilobites**

Peter Wellington

Trilobites are extinct marine arthropods which inhabited the coastal swamps millions of years ago.

Silvertop ash burl, coastal banksia, granite
75x27x14

Street Gallery

Exhibit 841**\$650.00****Triumph of the Trilobites No. 2**

Peter Wellington

Trilobites form one of the earliest known groups of Arthropods.

93x35x20

Brown barrel burl, blackwood, granite

Street Gallery

Exhibit 842

\$12,500.00



Personal Growth

Tika Robinson

As the world progresses we lose connection to life around us, shrinking our perspective inwards. To grow, our consciousness must expand to encompass all life.

Glazed ceramic, adhesive

182x52x75

Street Gallery

Exhibit 843

\$800.00



Canopy Dance Turning

Boyd McMillan

Trees make a slow canopy dance; turning and twisting towards the light and away from the wind and shade. The structure draws space turning.

Acrylic and copper

400x400x450

Street Gallery

Exhibit 844

\$3,800.00



In the Balance 1

Gary Christian

I hope we don't fall.

Bronze egg and oiled steel

30x23x69

Street Gallery

2024 Sponsors

SCULPTURE
BERMAGUI



Prizes and Awards:

- Sculpture Bermagui Major Prize
- Harborview House Special Mention
- Bermagui Beach Hotel Prize
- Cox Family Prize (Acquisitive)
- Rob and Sally Hawkins Prize (Acquisitive)
- Reflections Holiday Park People's Choice Outdoor Prize
- Bega Cheese People's Choice Indoor Prize
- South East Arts Local Artist Achievement Prize
- Peter 'Beagle' Collins Memorial Prize (Acquisitive)
- Wilma Enabling Youth Award
- Butterfield Property Prize Artwork from Repurposed Materials